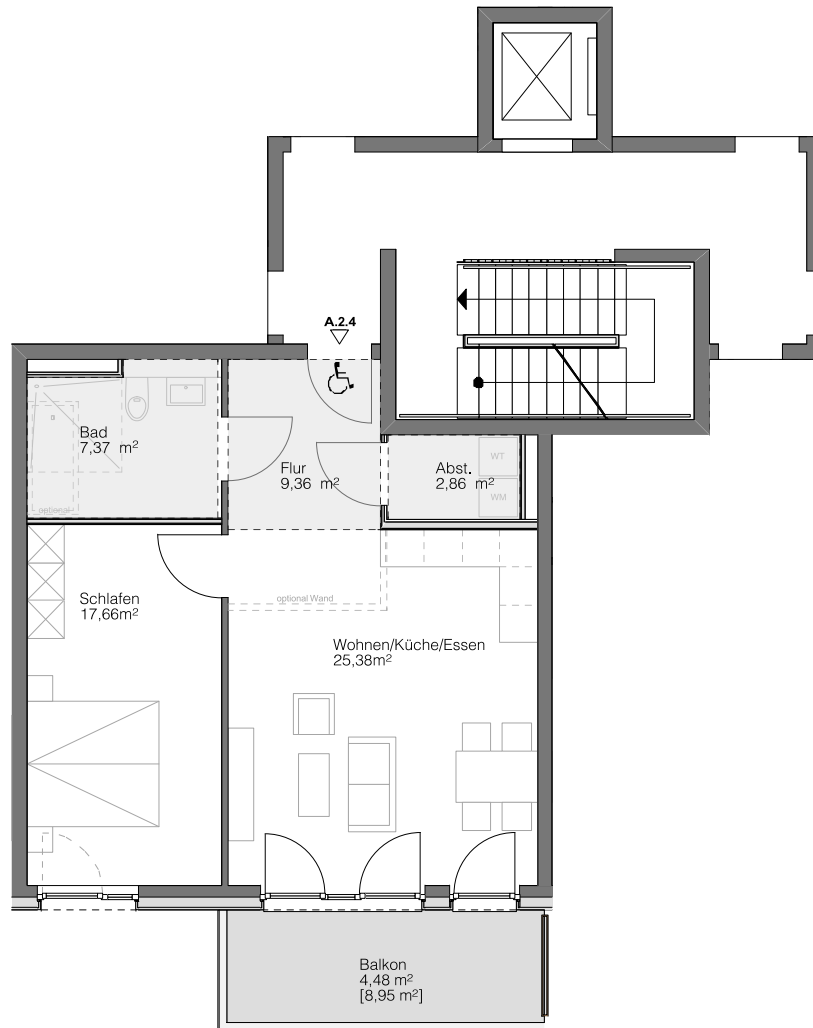



A.2.4

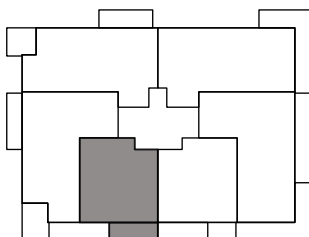
HAUS A

2. OBERGESCHOSS

Steimker
QUARTETT



 Abhangdecke



Wohnen/Küche/essen	25,38 m ²
Schlafen	17,66 m ²
Badezimmer	7,37 m ²
Abstellkammer	2,86 m ²
Flur	9,36 m ²
Balkon [8,95 m ²]	4,48 m ²
<hr/>	<hr/>
Gesamt	67,11 m ²

