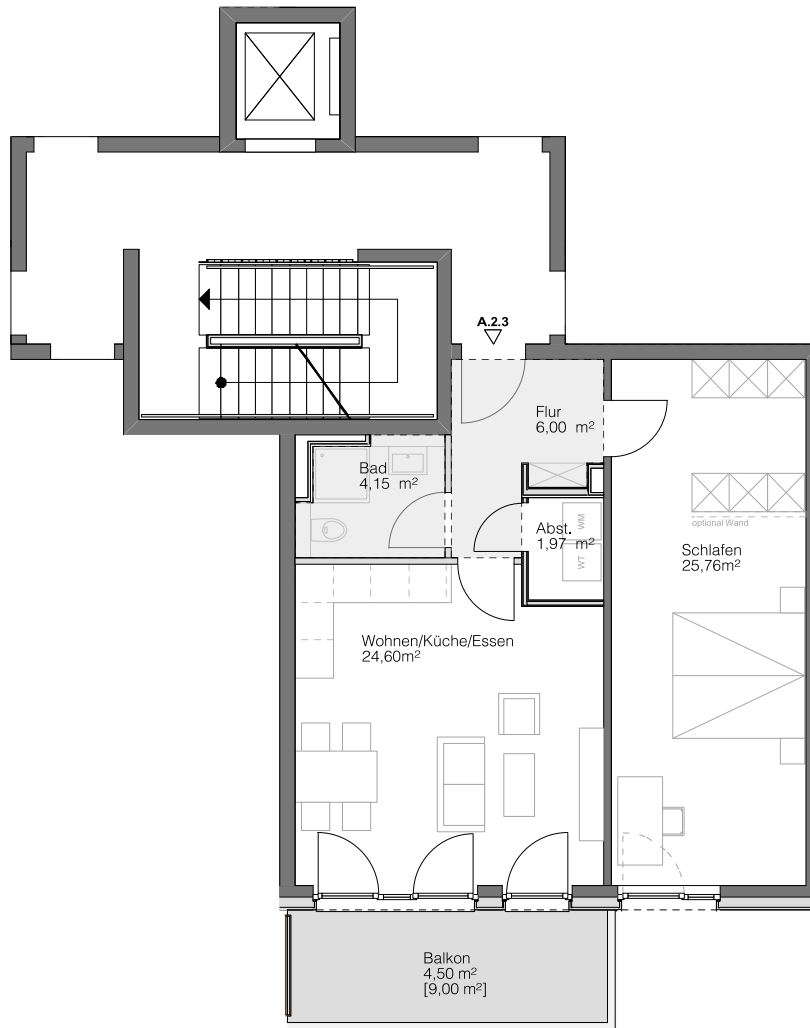


# A.2.3

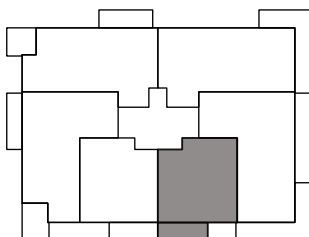
HAUS A

2. OBERGESCHOSS

Steimker  
**QUARTETT**



 Abhangdecke



Wohnen/Küche/Essen	24,60 m <sup>2</sup>
Schlafen	25,76 m <sup>2</sup>
Badezimmer	4,15 m <sup>2</sup>
Abstellkammer	1,97 m <sup>2</sup>
Flur	6,00 m <sup>2</sup>
Balkon [9,00 m <sup>2</sup> ]	4,50 m <sup>2</sup>
<b>Gesamt</b>	<b>66,98 m<sup>2</sup></b>

