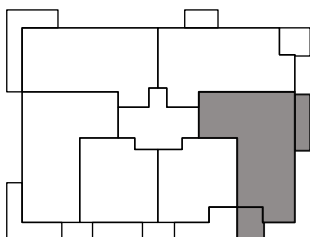
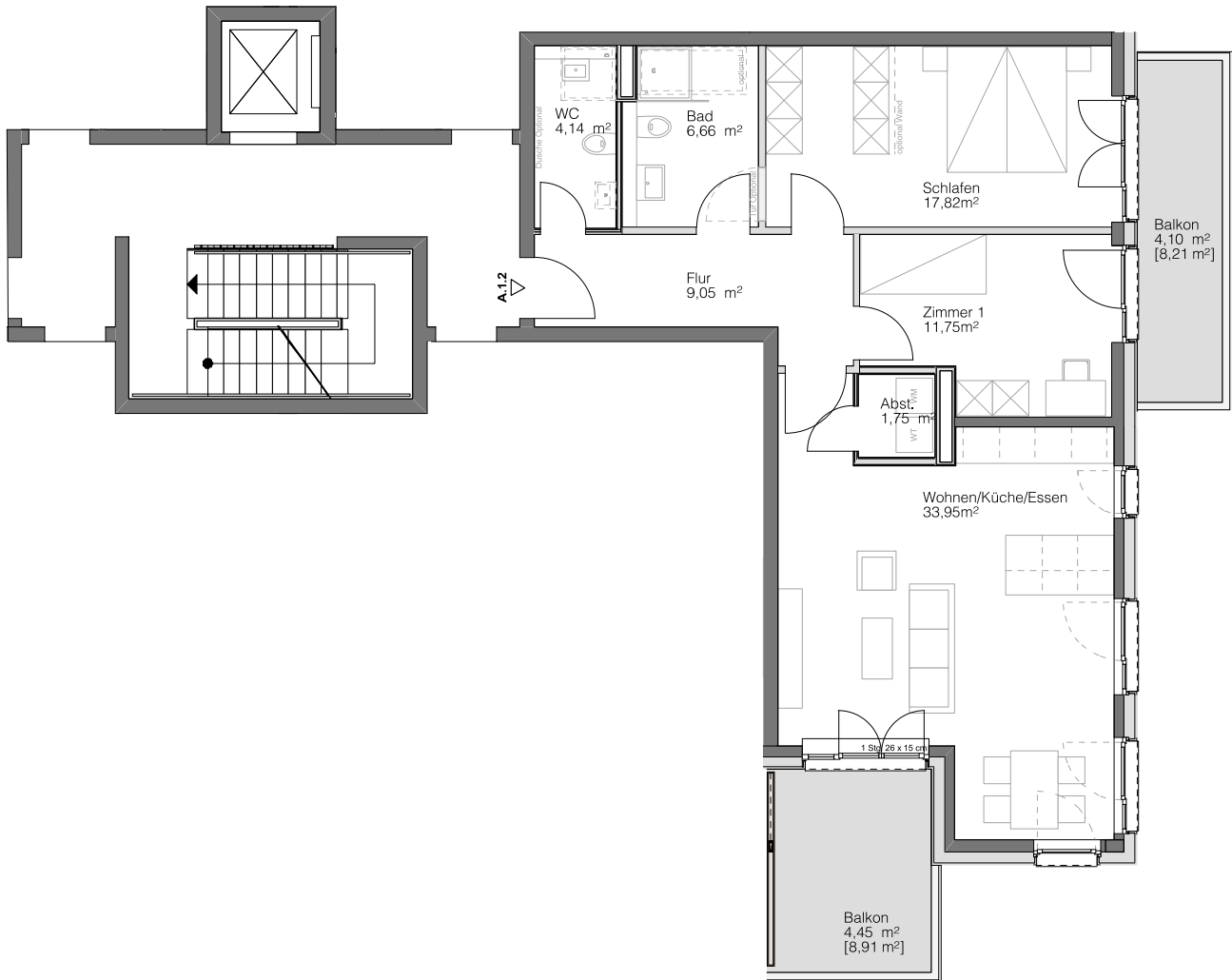


# A.1.2

HAUS A

1. OBERGESCHOSS

# Steimker QUARTETT



Wohnen/Küche/Essen	33,95 m <sup>2</sup>
Schlafen	17,82 m <sup>2</sup>
Zimmer 1	11,75 m <sup>2</sup>
Badezimmer	6,66 m <sup>2</sup>
WC	4,14 m <sup>2</sup>
Abstellkammer	1,75 m <sup>2</sup>
Flur	9,05 m <sup>2</sup>
Balkon [17,12 m <sup>2</sup> ]	8,56 m <sup>2</sup>
<b>Gesamt</b>	<b>93,68 m<sup>2</sup></b>

