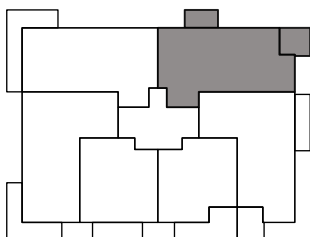
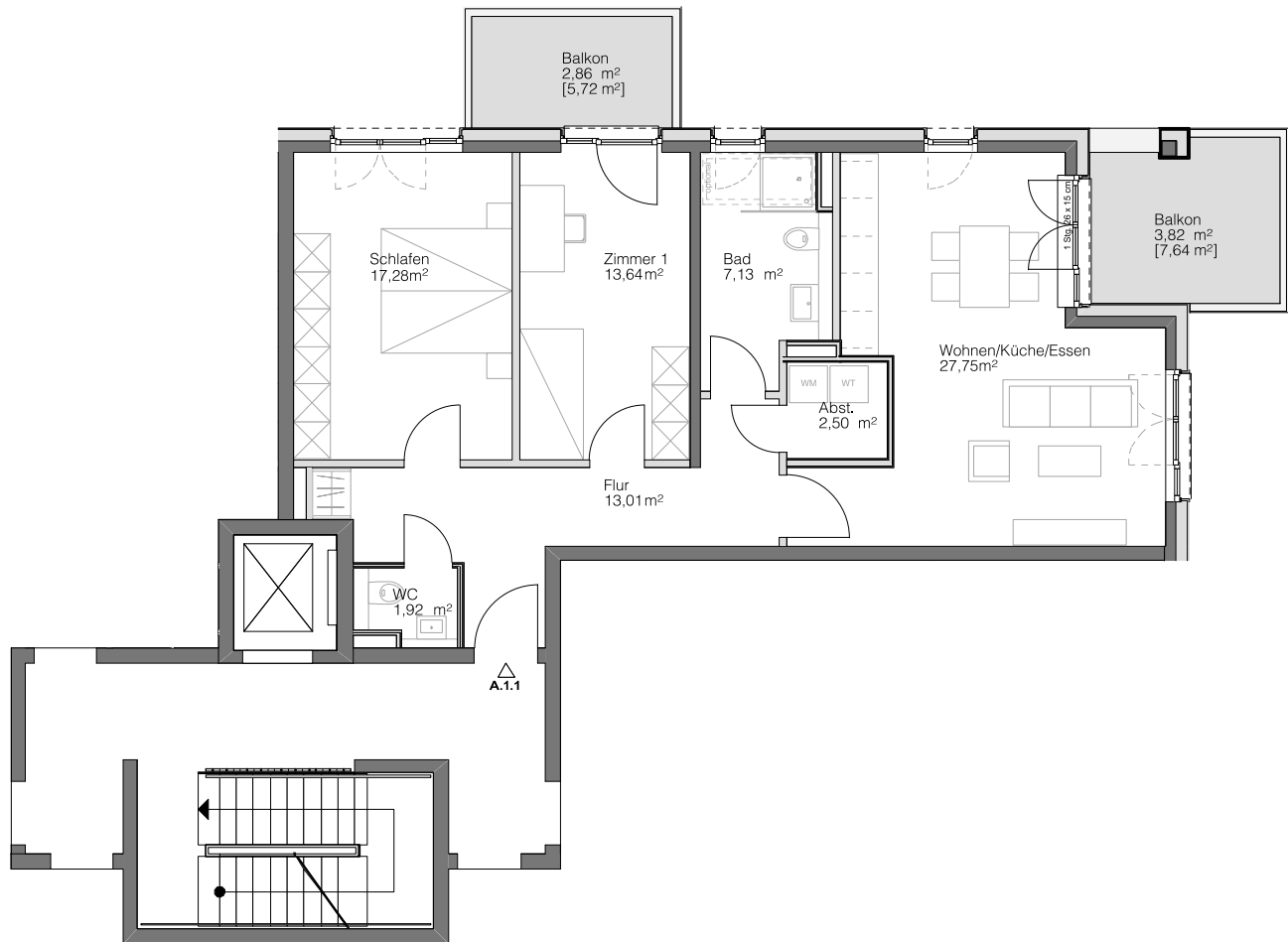


# A.1.1

## HAUS A

### 1. OBERGESCHOSS

# Steimker QUARTETT



Wohnen/Küche/Essen	27,75 m <sup>2</sup>
Schlafen	17,28 m <sup>2</sup>
Zimmer 1	13,64 m <sup>2</sup>
Badezimmer	7,13 m <sup>2</sup>
WC	1,92 m <sup>2</sup>
Abstellkammer	2,50 m <sup>2</sup>
Flur	13,01 m <sup>2</sup>
Balkon [13,36 m <sup>2</sup> ]	6,68 m <sup>2</sup>
<b>Gesamt</b>	<b>89,91 m<sup>2</sup></b>

