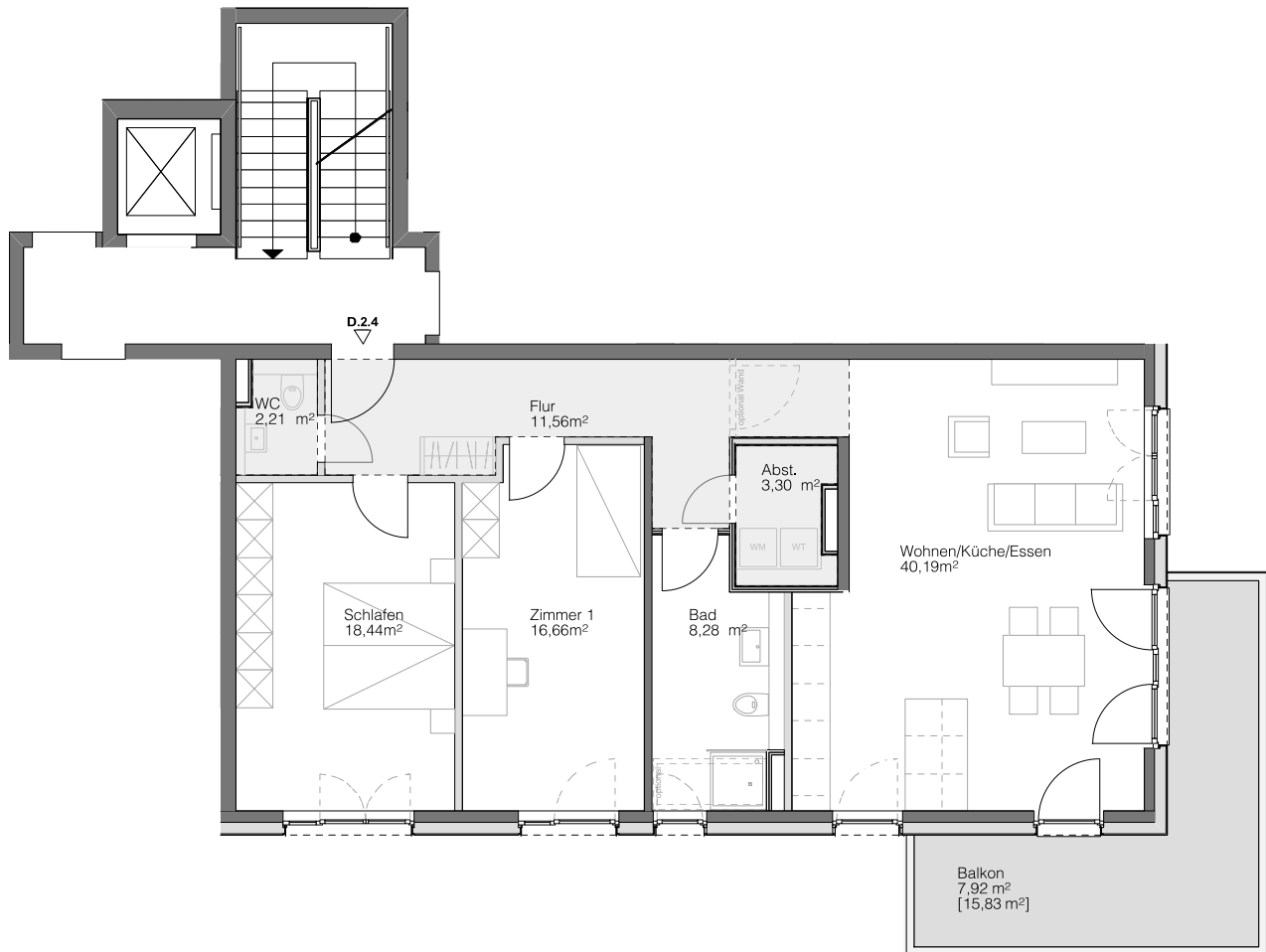


# D.2.4

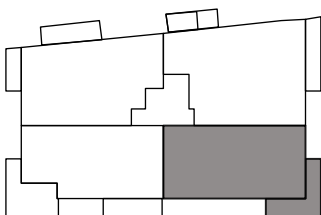
HAUS D

2. OBERGESCHOSS

Steimker  
**QUARTETT**



Abhangdecke



Wohnen/Küche/Essen	40,19 m <sup>2</sup>
Schlafen	18,44 m <sup>2</sup>
Zimmer 1	16,66 m <sup>2</sup>
Badezimmer	8,28 m <sup>2</sup>
WC	2,21 m <sup>2</sup>
Abstellkammer	3,30 m <sup>2</sup>
Flur	11,56 m <sup>2</sup>
Balkon [15,83 m <sup>2</sup> ]	7,92 m <sup>2</sup>
<b>Gesamt</b>	<b>108,56 m<sup>2</sup></b>

