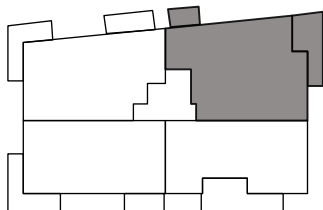
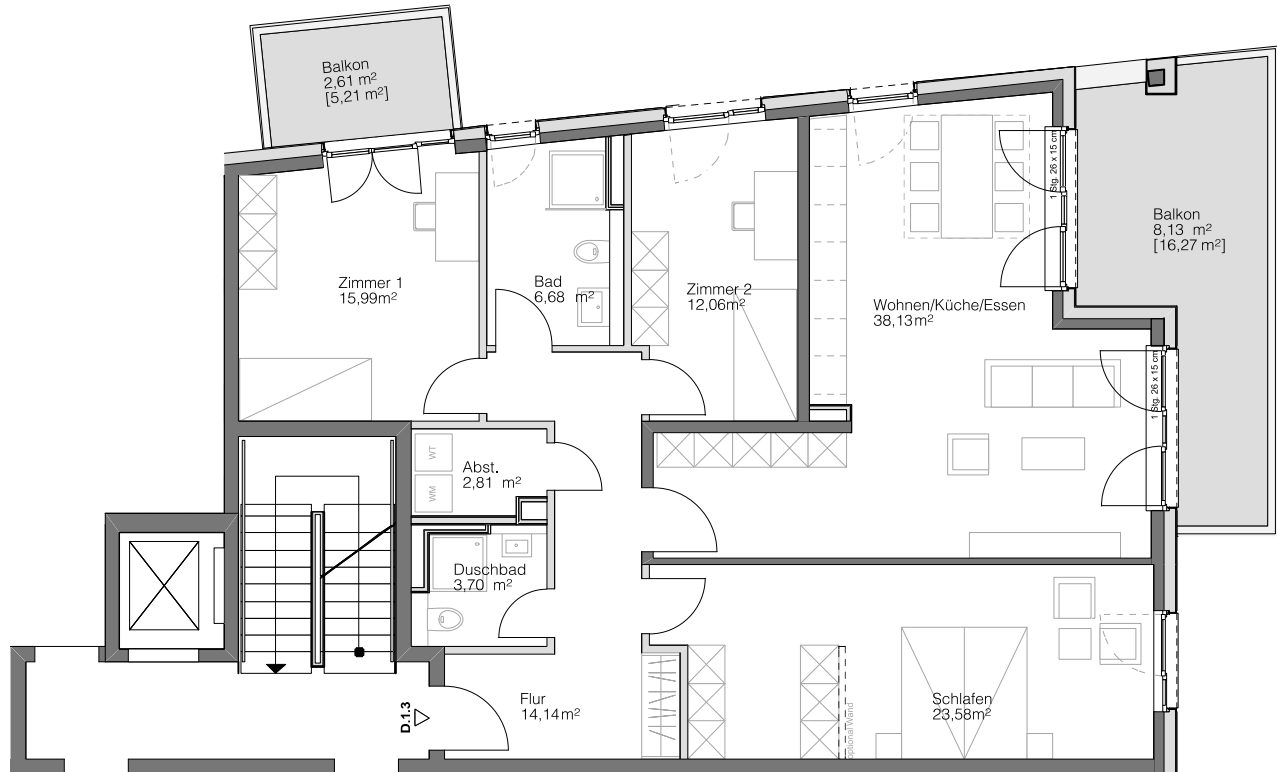


# D.1.3

## HAUS D

### 1. OBERGESCHOSS

# Steimker QUARTETT



Wohnen/Küche/Essen	38,13 m <sup>2</sup>
Schlafen	23,58 m <sup>2</sup>
Zimmer 1	15,99 m <sup>2</sup>
Zimmer 2	12,06 m <sup>2</sup>
Badezimmer	6,68 m <sup>2</sup>
Duschbad	3,70 m <sup>2</sup>
Abstellkammer	2,81 m <sup>2</sup>
Flur	14,14 m <sup>2</sup>
Balkon [21,72 m <sup>2</sup> ]	10,74 m <sup>2</sup>

Gesamt

127,83 m<sup>2</sup>

