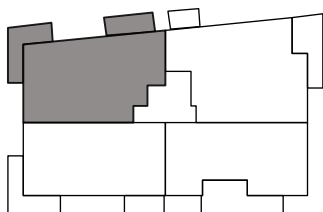
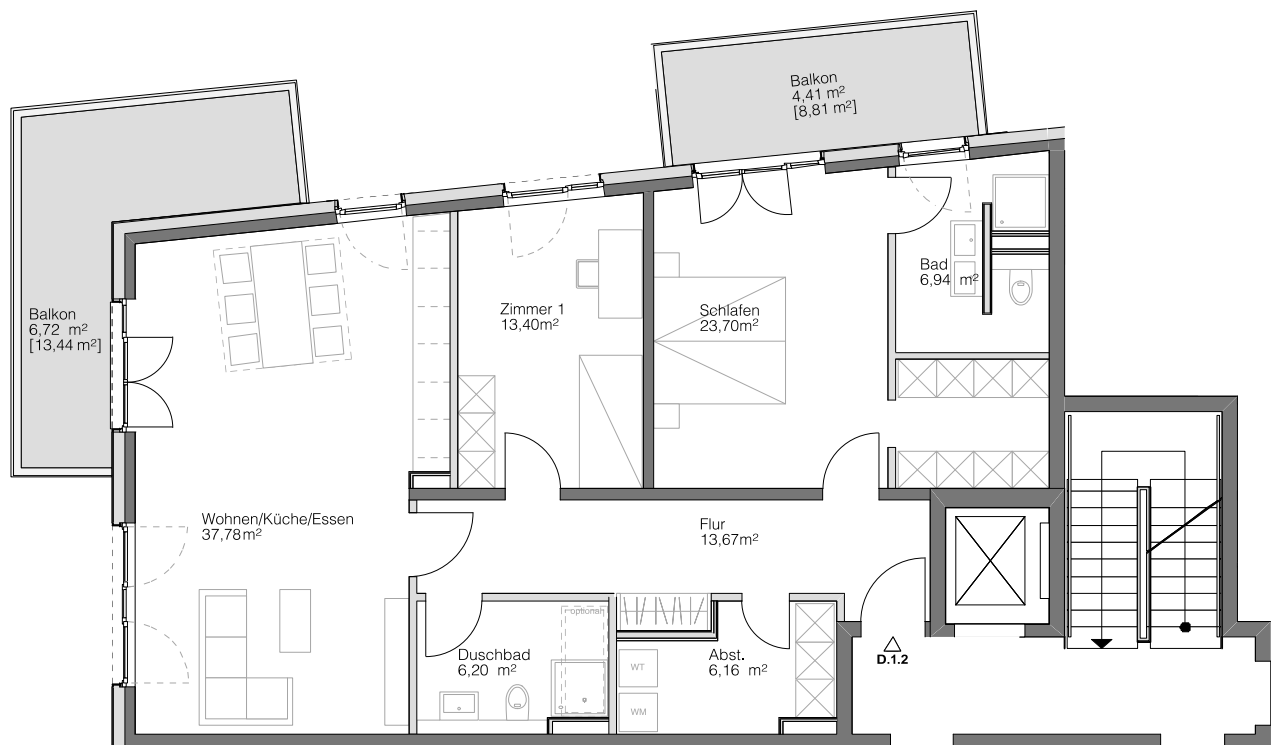


# D.1.2

HAUS D

1. OBERGESCHOSS

Steimker  
**QUARTETT**



Wohnen/Küche/Essen	37,78 m <sup>2</sup>
Schlafen	23,70 m <sup>2</sup>
Zimmer 1	13,40 m <sup>2</sup>
Badezimmer	6,94 m <sup>2</sup>
Duschbad	6,20 m <sup>2</sup>
Abstellkammer	6,16 m <sup>2</sup>
Flur	13,67 m <sup>2</sup>
Balkon [22,25 m <sup>2</sup> ]	11,13 m <sup>2</sup>
<b>Gesamt</b>	<b>118,98 m<sup>2</sup></b>

