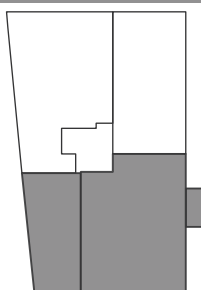
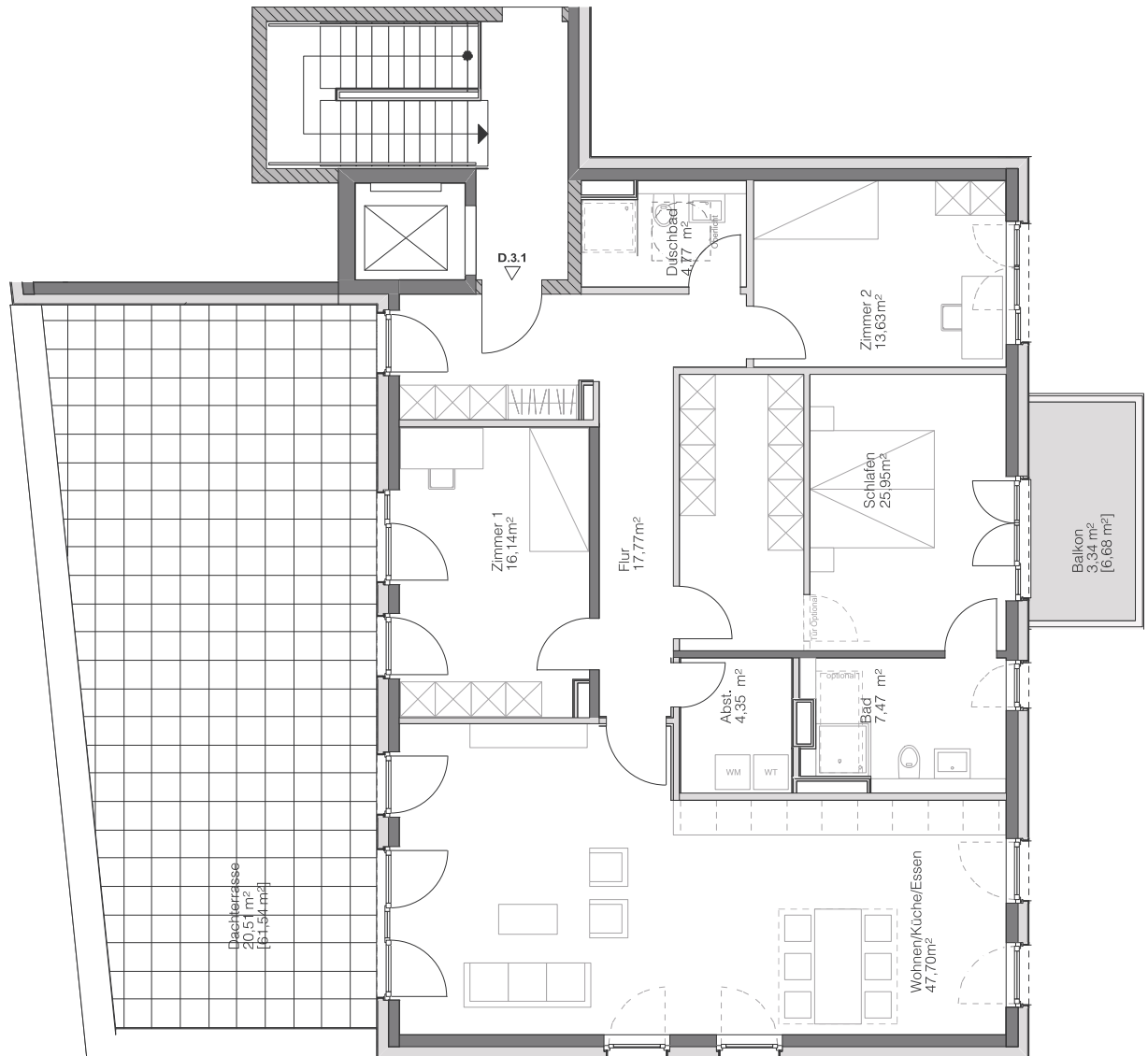


# D.3.1

HAUS D

STAFFELGESCHOSS

# Steimker QUARTETT



Wohnen/Küche/Essen	47,70 m <sup>2</sup>
Schlafen	25,95 m <sup>2</sup>
Zimmer 1	16,14 m <sup>2</sup>
Zimmer 2	13,63 m <sup>2</sup>
Badezimmer	7,47 m <sup>2</sup>
Duschbad	4,77 m <sup>2</sup>
Abstellkammer	4,35 m <sup>2</sup>
Flur	17,77 m <sup>2</sup>
Balkon [6,68 m <sup>2</sup> ]	3,34 m <sup>2</sup>
Dachterrasse [61,94 m <sup>2</sup> ]	20,51 m <sup>2</sup>
<b>Gesamt</b>	<b>161,63 m<sup>2</sup></b>

