

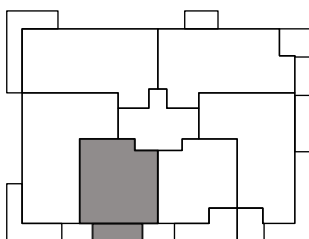
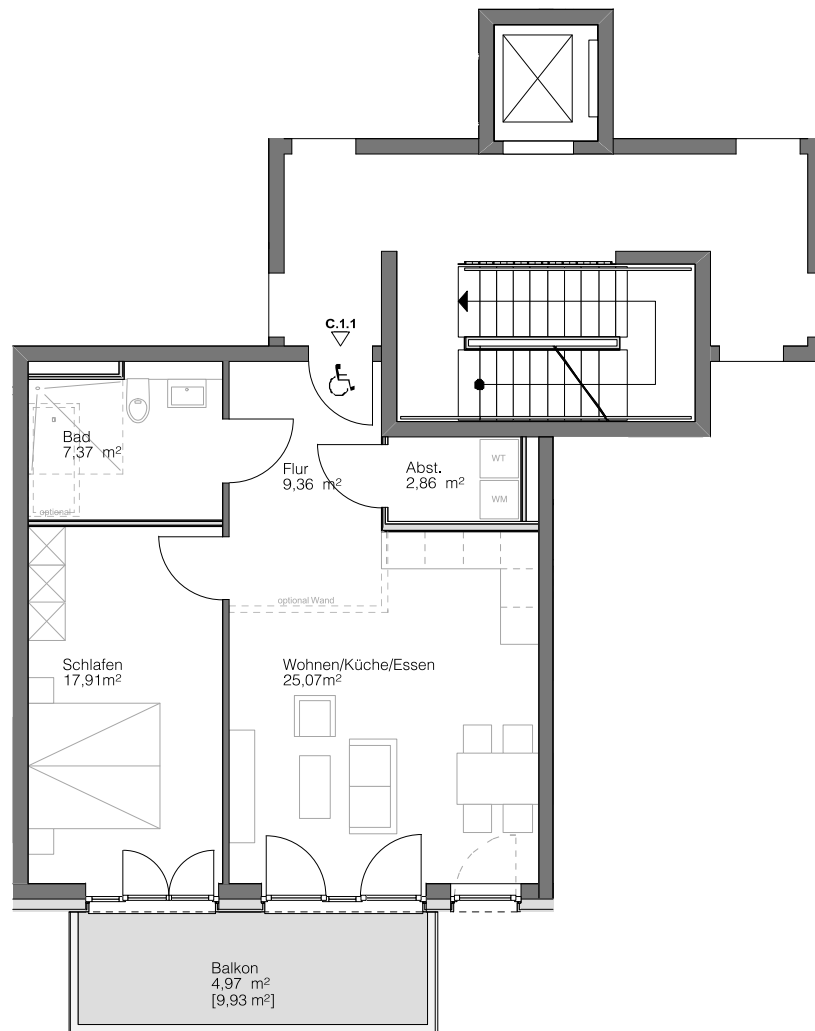
# C.1.1

HAUS C

1. OBERGESCHOSS

Steimker

# QUARTETT



Wohnen/Küche/essen	25,07 m <sup>2</sup>
Schlafen	17,91 m <sup>2</sup>
Badezimmer	7,37 m <sup>2</sup>
Abstellkammer	2,86 m <sup>2</sup>
Flur	9,36 m <sup>2</sup>
Balkon [9,93 m <sup>2</sup> ]	4,97 m <sup>2</sup>
<hr/>	
Gesamt	67,54 m <sup>2</sup>

