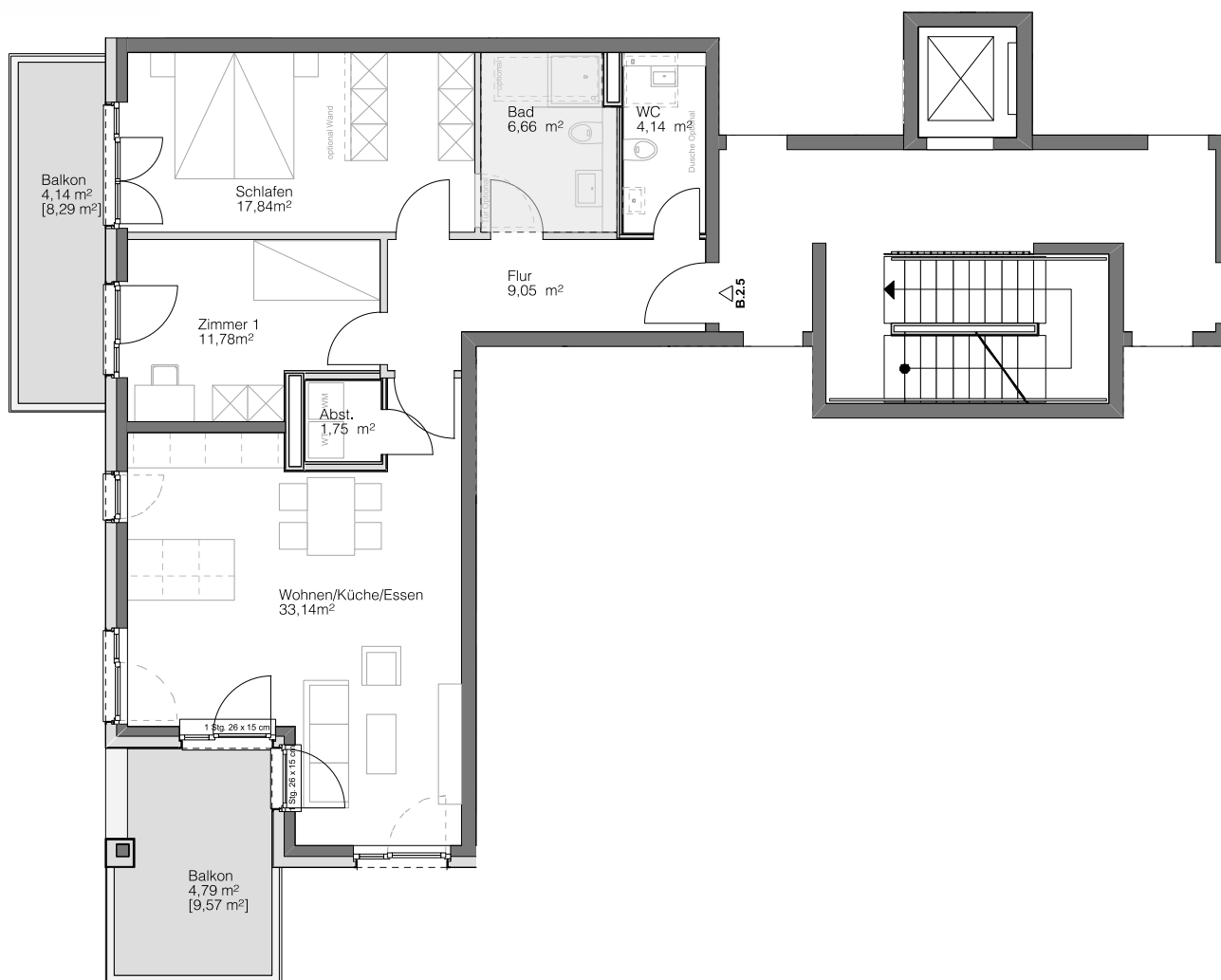


B.2.5

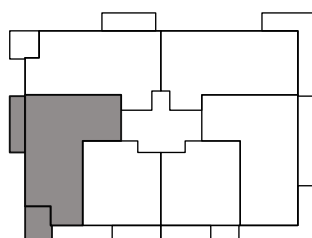
HAUS B

2. OBERGESCHOSS

Steimker
QUARTETT



 Abhangdecke



Wohnen/Küche/Essen	33,14 m ²
Schlafen	17,84 m ²
Zimmer 1	11,78 m ²
Badezimmer	6,66 m ²
Abstellkammer	1,75 m ²
Flur	9,05 m ²
WC	4,14 m ²
Balkon [17,86 m ²]	8,93 m ²
Gesamt	93,29 m²

