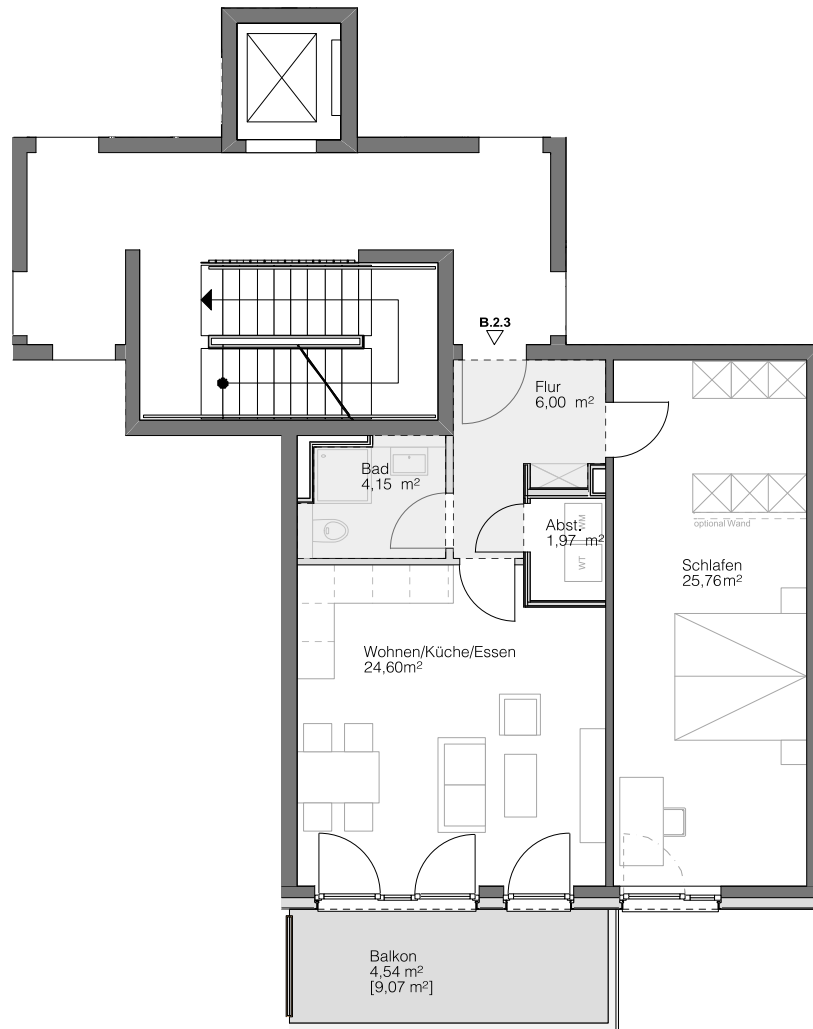



# B.2.3

HAUS B

2. OBERGESCHOSS

Steimker  
**QUARTETT**



 Abhangdecke



Wohnen/Küche/Essen	24,60 m <sup>2</sup>
Schlafen	25,76 m <sup>2</sup>
Badezimmer	4,15 m <sup>2</sup>
Abstellkammer	1,97 m <sup>2</sup>
Flur	6,00 m <sup>2</sup>
Balkon [9,07 m <sup>2</sup> ]	4,54 m <sup>2</sup>
<hr/>	
Gesamt	67,02 m <sup>2</sup>

