

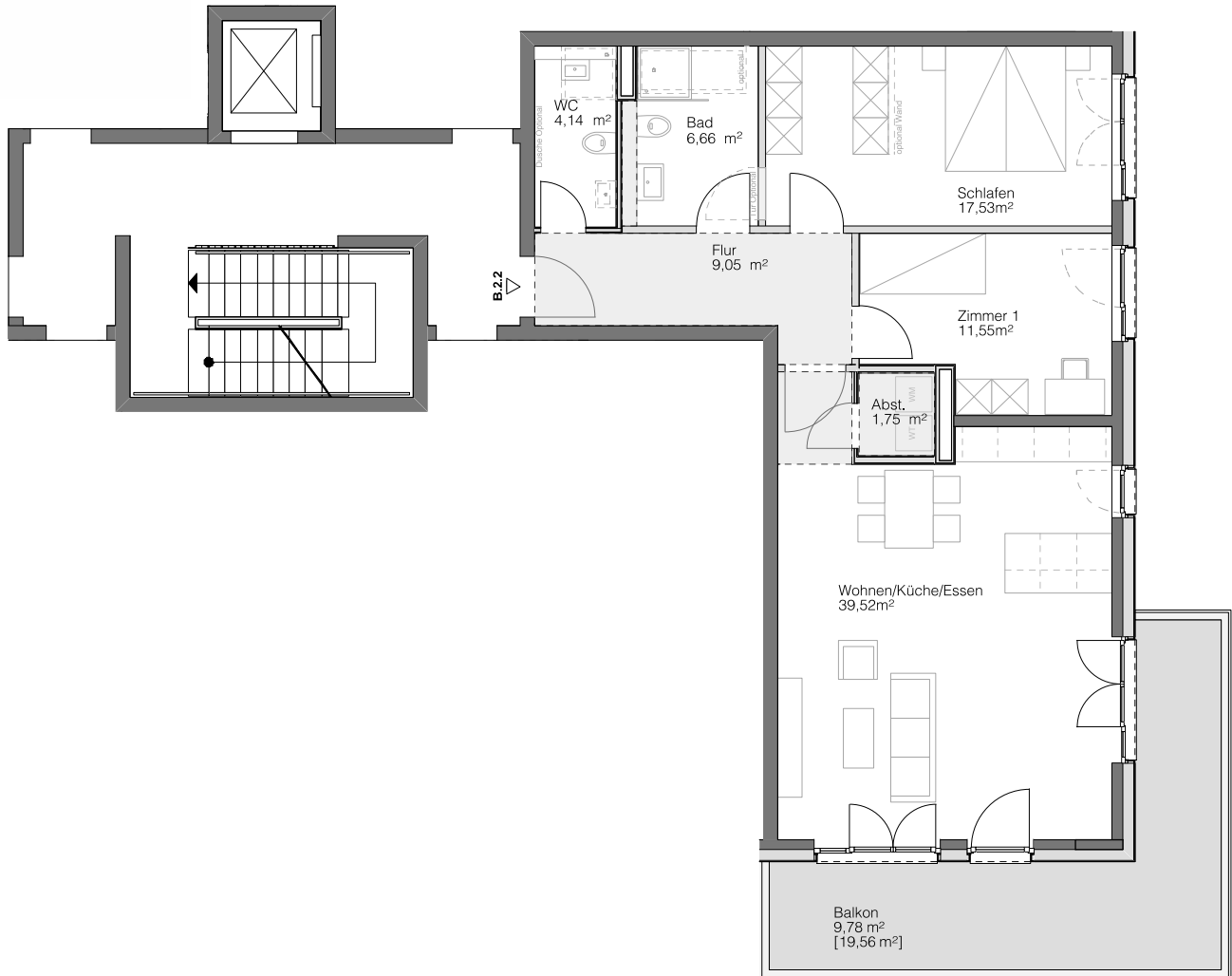
# B.2.2

HAUS B

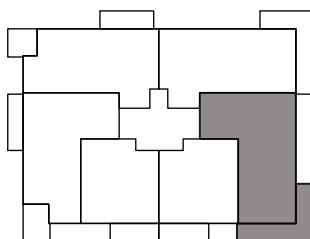
2. OBERGESCHOSS

Steimker

# QUARTETT



Abhangdecke



Wohnen/Küche/Essen	39,52 m <sup>2</sup>
Schlafen	17,53 m <sup>2</sup>
Zimmer 1	11,55 m <sup>2</sup>
Badezimmer	6,66 m <sup>2</sup>
Abstellkammer	1,75 m <sup>2</sup>
Flur	9,05 m <sup>2</sup>
WC	4,14 m <sup>2</sup>
Balkon [19,56 m <sup>2</sup> ]	9,78 m <sup>2</sup>
<b>Gesamt</b>	<b>99,98 m<sup>2</sup></b>

