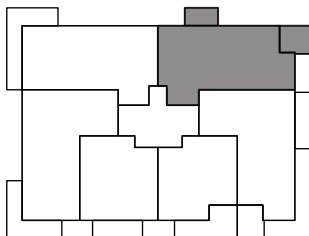
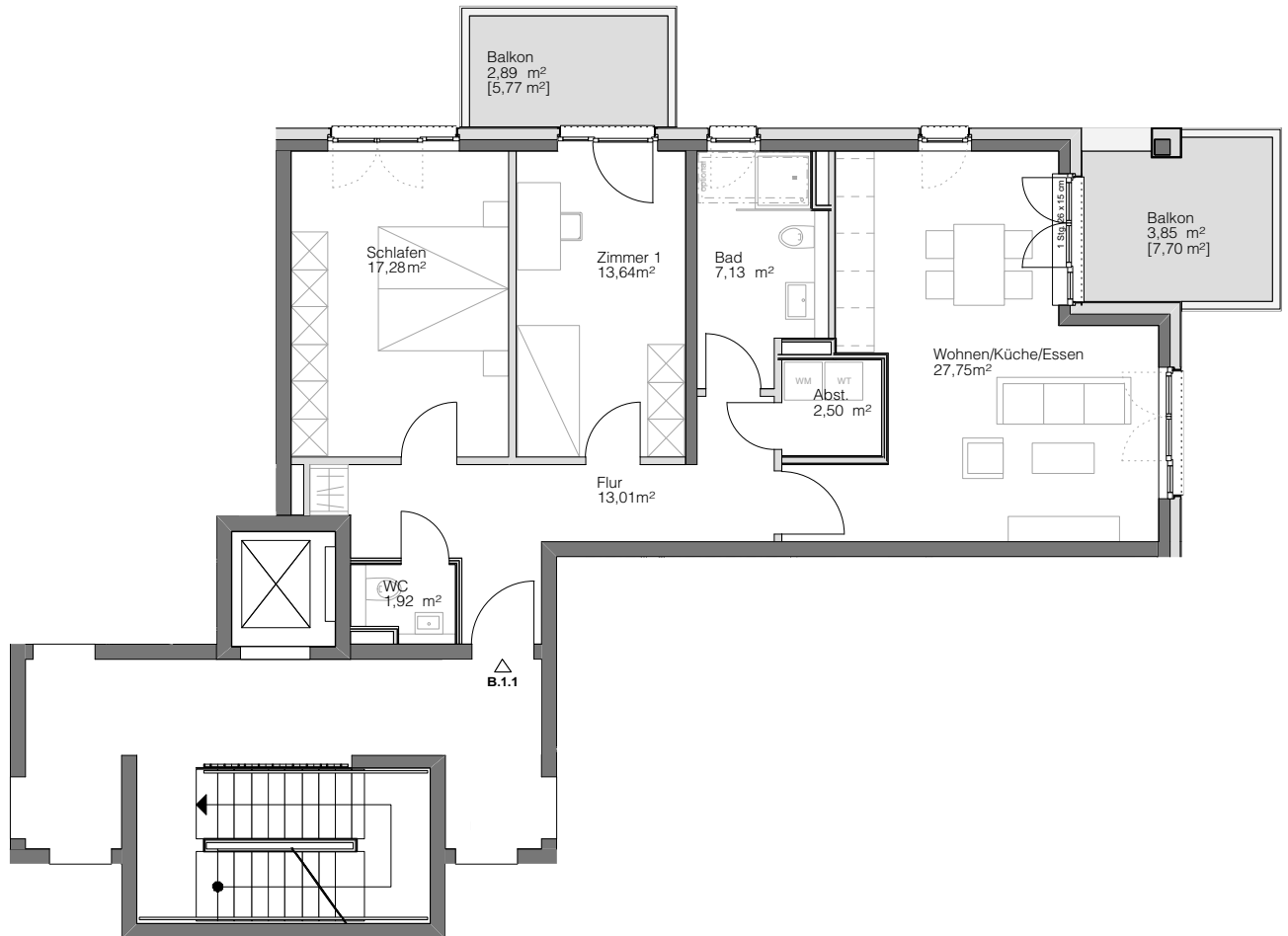


B.1.1

HAUS B

1. OBERGESCHOSS



| | |
|--------------------------------|----------------------------|
| Wohnen/Küche/essen | 27,75 m ² |
| Schlafen | 17,28 m ² |
| Zimmer 1 | 13,64 m ² |
| Badezimmer | 7,13 m ² |
| Abstellkammer | 2,50 m ² |
| Flur | 13,01 m ² |
| WC | 1,92 m ² |
| Balkon [13,47 m ²] | 6,74 m ² |
| Gesamt | 89,97 m² |

